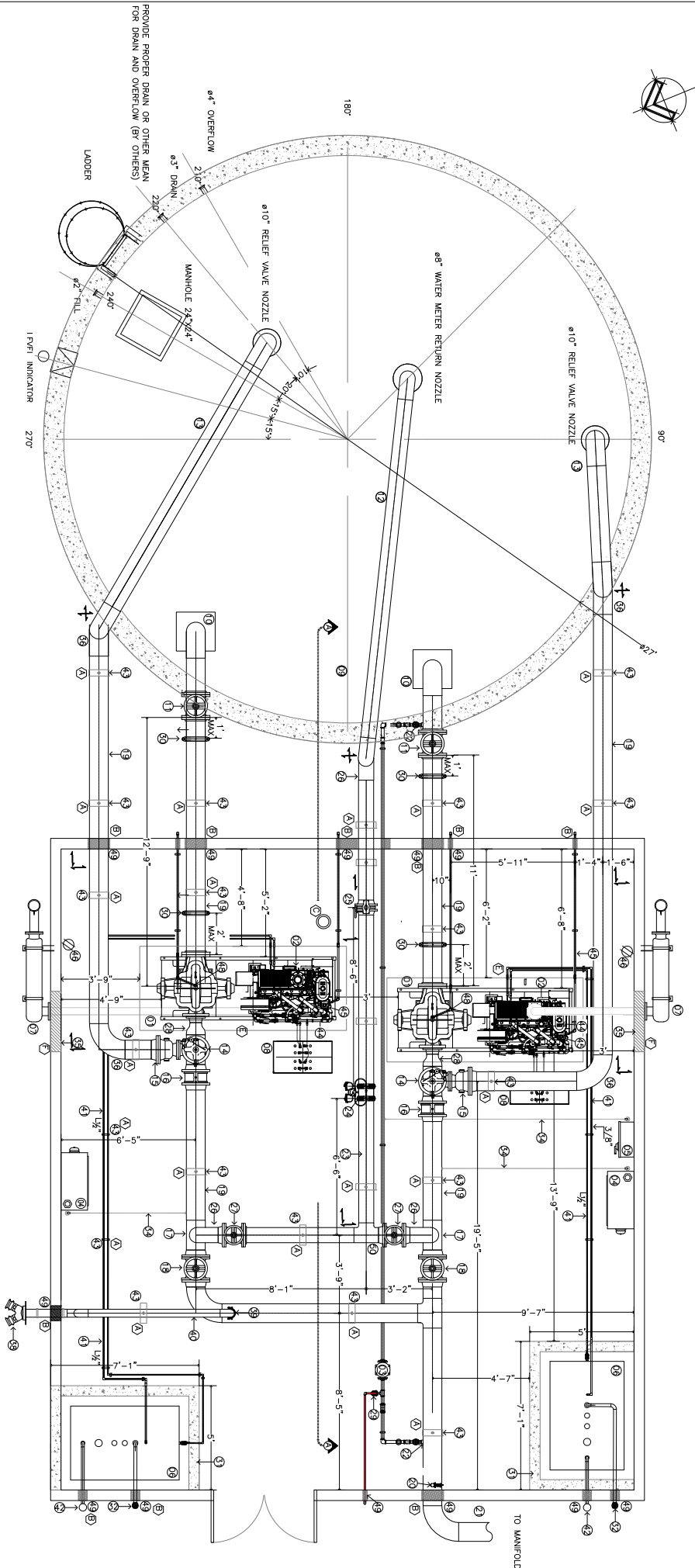


1 FIRE PROTECTION SYSTEM - PUMP ROOM

SCALE 1:40

2 GENERAL NOTES



THIS DOOR SHALL OPEN TO EXTERIOR TO AVOID
INTERFERENCE WITH FIRE PROTECTION TANK AND LADDER

SECTION VIEWS A-A"

SCALE 1:40

4 ELECTRICAL REQ'S

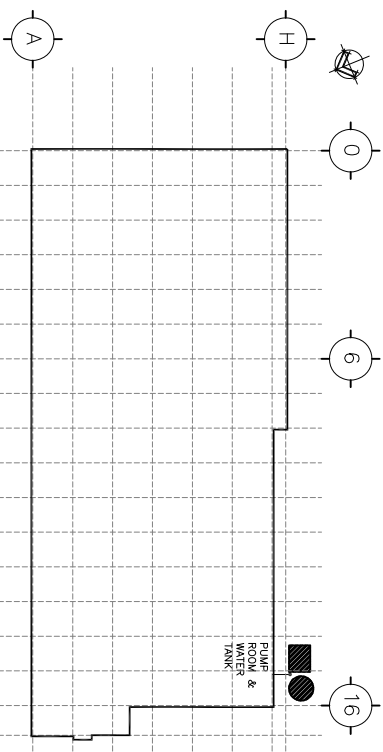
- * CHECK LEVELS FROM PUMP BASE AND BASE OF WATER TANK TO AVOID ANY DISPLACEMENT FROM AXIS (CENTER OF PIPING)
- PUMP & TANK FOUNDATION MUST BE DESIGNED TO ABSORB VIBRATION, WEIGHT AND MUST GUARANTEE THAT THE PUMP IS ALIGNED WITH THE TANK Suction NOZZLE (BY CIVIL CONTRACTOR)
- PUMP ROOM LEVEL IS BEING CONSIDERED TO BE ALIGNED WITH EXTERIOR FINISH FLOOR LEVEL.
- FINAL DRAWING FOR FOUNDATION PURPOSES SHALL BE ISSUED BY THE STRUCTURAL & CIVIL ENGINEER, INCLUDING PLANS FOR THE PUMP ROOM
- 1) PROVIDE PROPER PIPE SUPPORTS FOR ALL PIPING
- 2) PENETRATIONS IN WALLS AND PIPE SLEEVES (BY CIVIL CONTRACTOR)
- 3) CONDUITS LAYING IN PUMP ROOM (BY HIRONSANITARY CONTRACTOR)
- 4) PUMP ROOM CONSTRUCTION AND ALL CIVIL/ELECTRICAL WORKS (BY CIVIL/ELECTRICAL CONTRACTOR)
- 5) PUMP & TANK FOUNDATION MUST BE DESIGNED TO ABSORB VIBRATION, WEIGHT AND MUST GUARANTEE THAT THE PUMP IS ALIGNED WITH THE TANK Suction NOZZLE (BY CIVIL CONTRACTOR)
- 6) VENTILATION IN PUMP ROOM (BY HVAC CONTRACTOR)

5 TANK NOZZLE LOCATION

| | NOZZLE | DIM | LOCATION | OBSERVATION |
|-------------------------|-----------------|------|----------|-------------|
| SUCTION-MANN PUMP | 10 ³ | 18' | STANDARD | AS HIGHEST |
| SUCTION-BACKUP PUMP | 10 ³ | 343' | TOP RING | AS HIGHEST |
| SUCTION - BBA RESERVOIR | | | | |
| RETURN-FLOW METER | 8 ⁹ | 270' | TOP RING | AS HIGHEST |
| RETURN-RELIEF VALVE | 10 ³ | 270' | TOP RING | AS HIGHEST |
| FILL | 2 ³ | 240' | STANDARD | AS HIGHEST |
| DRAIN | 3 ³ | 220' | STANDARD | HEIGHT |
| OVERFLOW | 4 ³ | 210' | STANDARD | HEIGHT |

6 KEY PLAN

SIN ESCALA



GENERAL NOTES

[illegible]

REFERENCES

- | | | |
|----|------------|-------------------------------------|
| 1 | 1" | FIRE PUMP-DM 2000 GPM @ 125'-PSI |
| 2 | 1" | DIESEL ENGINE DRIVEN |
| 3 | 1" | 10' SUPPLY NOZZLE W/10'-PSI |
| 4 | 1" | DIESEL FIRE PUMP CONTROLLER |
| 5 | 1" | JOCKEY PUMP CONTROLLER |
| 6 | 3/80 40" | DIESEL TANK |
| 7 | 6" | INDUSTRIAL WAFER |
| 8 | 128,000 | NOMINAL STEEL BOLTED TANK |
| 9 | 10" | SUPPLY NOZZLE W/O.S. AIR |
| 10 | 8" | RETURN PIPE - FLOWMETER |
| 11 | 8" | RELIEF VALVE - FLOWMETER |
| 12 | 6.5x10' | CLOSED WASTE COVE |
| 13 | 10"x10x4" | REDUCER TEEL |
| 14 | 10" | CHECK VALVE WATER DOUBLE DOOR |
| 15 | 10" | DISCHARGE GATE VALVE 65K# |
| 16 | 2" | RISER VALVE TO SPRINKLER PROTECTION |
| 17 | 1" | JOCKEY PUMP PIPING CONNECTION |
| 18 | 8" | FLOWMETER 2000 GPM |
| 19 | 8" | BUTTERFLY VALVE |
| 20 | 8" | GATE VALVE |
| 21 | 10"x8" | CONCENTRIC REDUCER |
| 22 | 10" | PRESSURE RELIEF VALVE |
| 23 | 10" | FLEXIBLE COUPLING |
| 24 | 10" | CONTAINMENT DOME OF |
| 25 | 10" | DIESEL LEAK PROOF |
| 26 | 1 1/2" | TIL. FLAT. PORT |
| 27 | 10x10x4" | TEEL |
| 28 | 3/4" | PRESSURE SENSING LINES |
| 29 | 10" | LOUVERS |
| 30 | 10x10x4" | ELBOW |
| 31 | 4x10x4" | CHECK VALVE |
| 32 | 4x10x4" | ELBOW |
| 33 | 1/2" | PIPE FOR SUPPLY |
| 34 | 3/8" | FOR RETURN TUEL |
| 35 | NOMINAL 2" | (DIESEL TANK) |
| 36 | 1" | ENGINE HEATER |
| 37 | 1" | RAW WATER OUTLET 1 1/2" |
| 38 | 1" | RECEPIPLCE FOR MAINTNANCE |
| 39 | 1" | SPRINKLER UPRICH K-8.0 FAP |
| 40 | 1" | AUTOMATIC AIR RELEASE VALVE |
| 41 | 1" | PIPE STEELS |
| 42 | TEEL 8" | |

[illegible]

FIRE PROTECTION SYSTEM
- PUMP ROOM

Drawing No.: FPS02

INDICATED